



PORTFOLIO



ABOUT KATIE

Hello! I'm really excited to jump straight in, but first here is a little information about my background and how I came to be in the interior design world.

HOW IT BEGAN... I embarked my creative career in 2013. I have always had a love for design and quickly established an illustrated homewares company, Katie Cardew Illustrations. Myself and my team have been so lucky to enjoy many successes in the field. We currently own three of our own 'Katie Cardew' stores, work with some amazing brands such as Harper Collins and the RHS and have over 180 stockists of our illustrated products.

INTERIOR DESIGN.... Fast forward a decade, and with my business partner safely at the helm of Katie Cardew Illustrations, I decided to formalise an area of design that I have enjoyed informally for years; interior design. I set about training and qualified with full marks from the internationally accredited Interior Design Institute. I hit the ground running and have been so privileged to work on many beautiful projects, from single rooms up to full house renovations. I have enjoyed success in House and Garden magazine and write a seasonal double page interiors feature

I can provide both onsite and online packages, enabling me to work with clients both near and far. From simple colour plans to entire house renovations, I provide friendly, simple and straightforward help, to save time, money and very importantly, stress.

Now, let the fun begin!

Katie x

‘ MORE IS MORE AND LESS IS A BORE ,

Iris Apfel



my
STYLE

The thread that ties all my projects together is creating
houses that feel like home

Time and time again I see houses that look uncomfortable to live in.
Too perfect, too precious, too much like a show home.

My designs revolve around the client and how *they* live.
Share your home with 5 dogs? Not a problem. Want a cosy space to
crochet hats? No drama. I will work to create plans that suit *your*
lifestyle.

I love to mix in antiques with newer items and layer up colours and
textures to create rooms which are beautifully inviting, comfortable
and, importantly, reassuringly long-lasting.

Drink wine on the sofa. Make a huge mess concocting a roast dinner.
Let the kids build a den from the cushions.

A home to live life in.

Example
PROJECTS





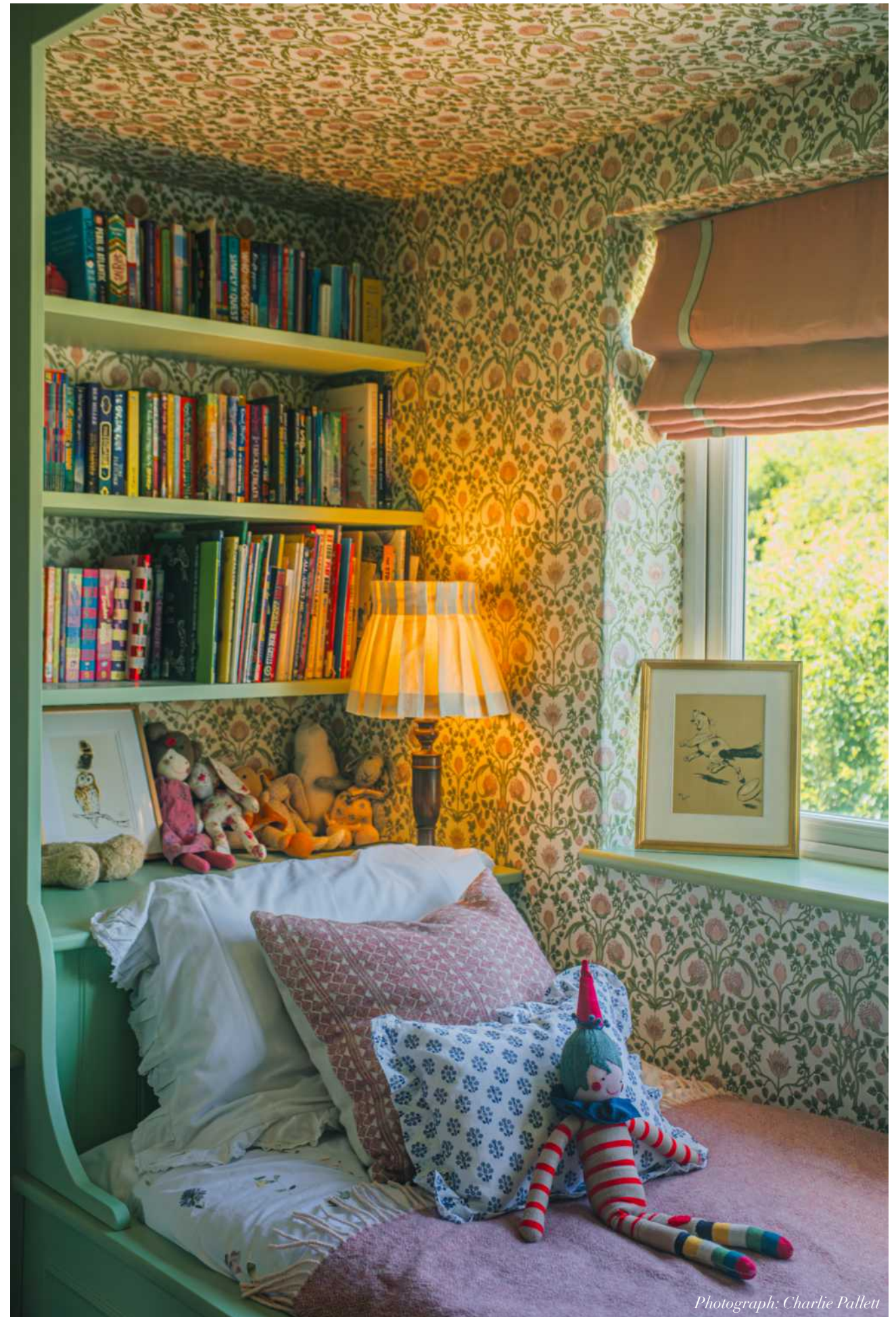
Photograph: Alex Wallace Photography
Bottom right: Charlie Pallett

*Featured
by
House & Country
magazine*





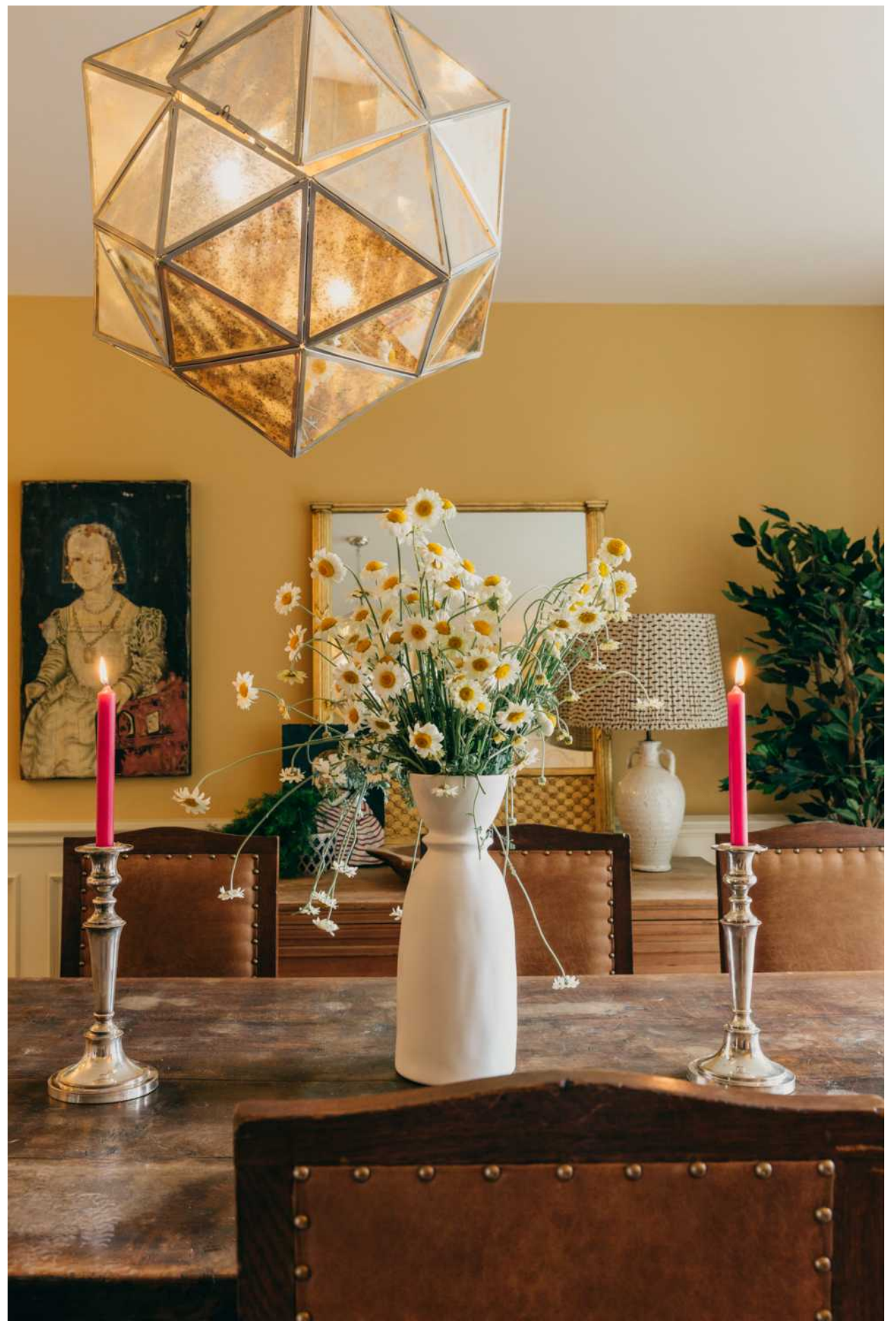
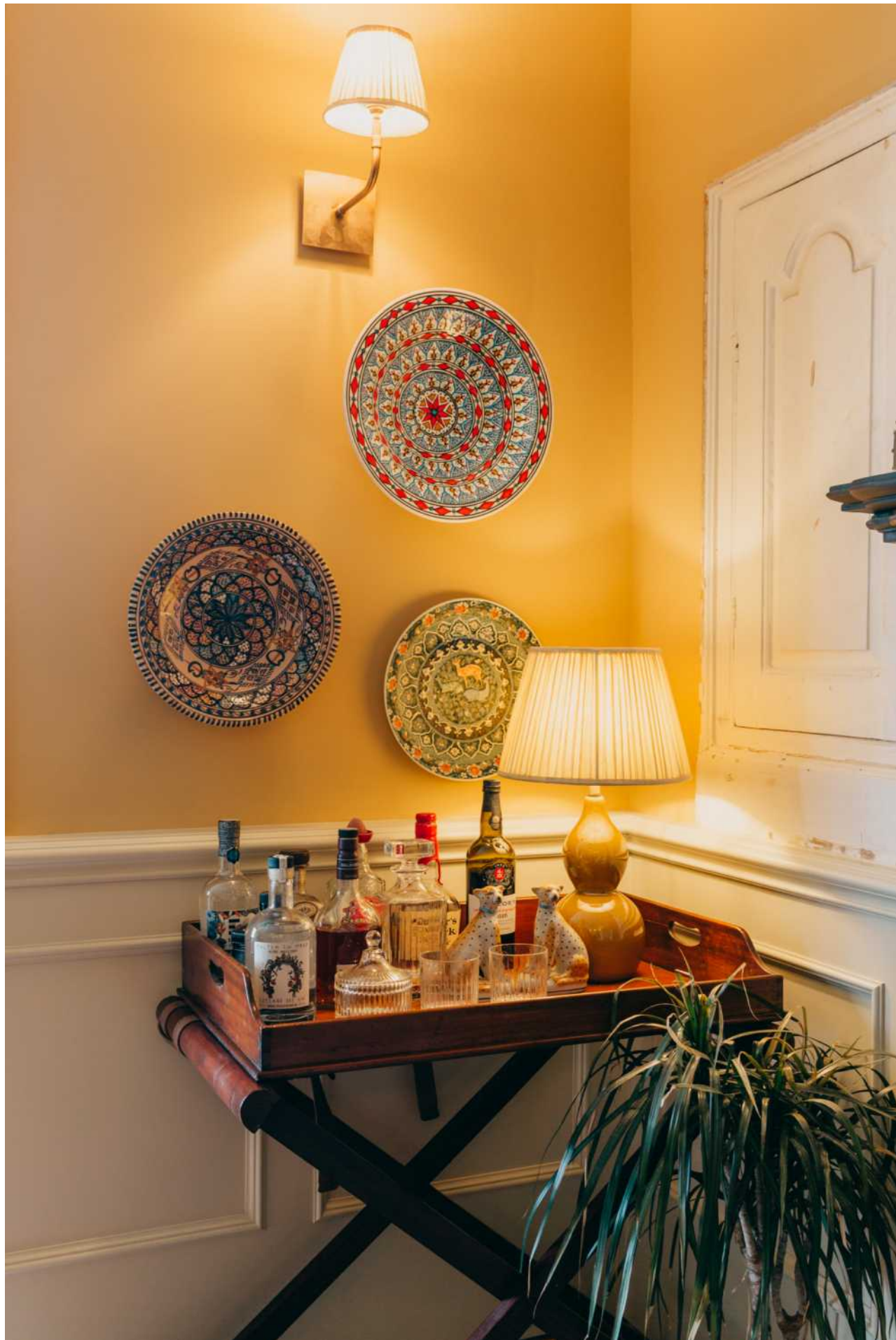
Photograph: Charlie Pallett



Photograph: Charlie Pallett



Photograph: Charlie Pallett



Photograph: Alex Wallace Photography



Example
3D RENDERS

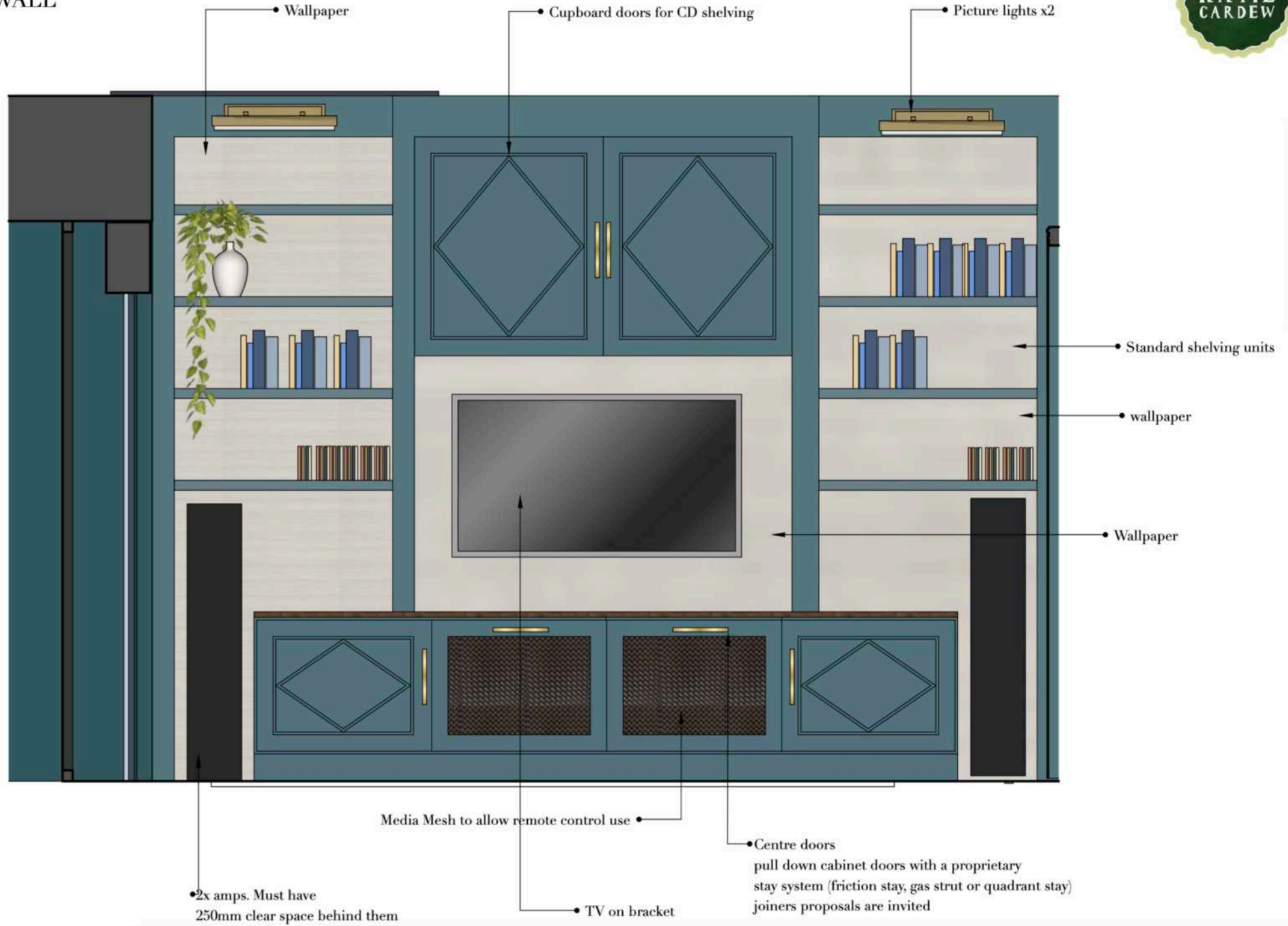
Digital renders of room designs, prior to work commencing



Example
3D RENDERS

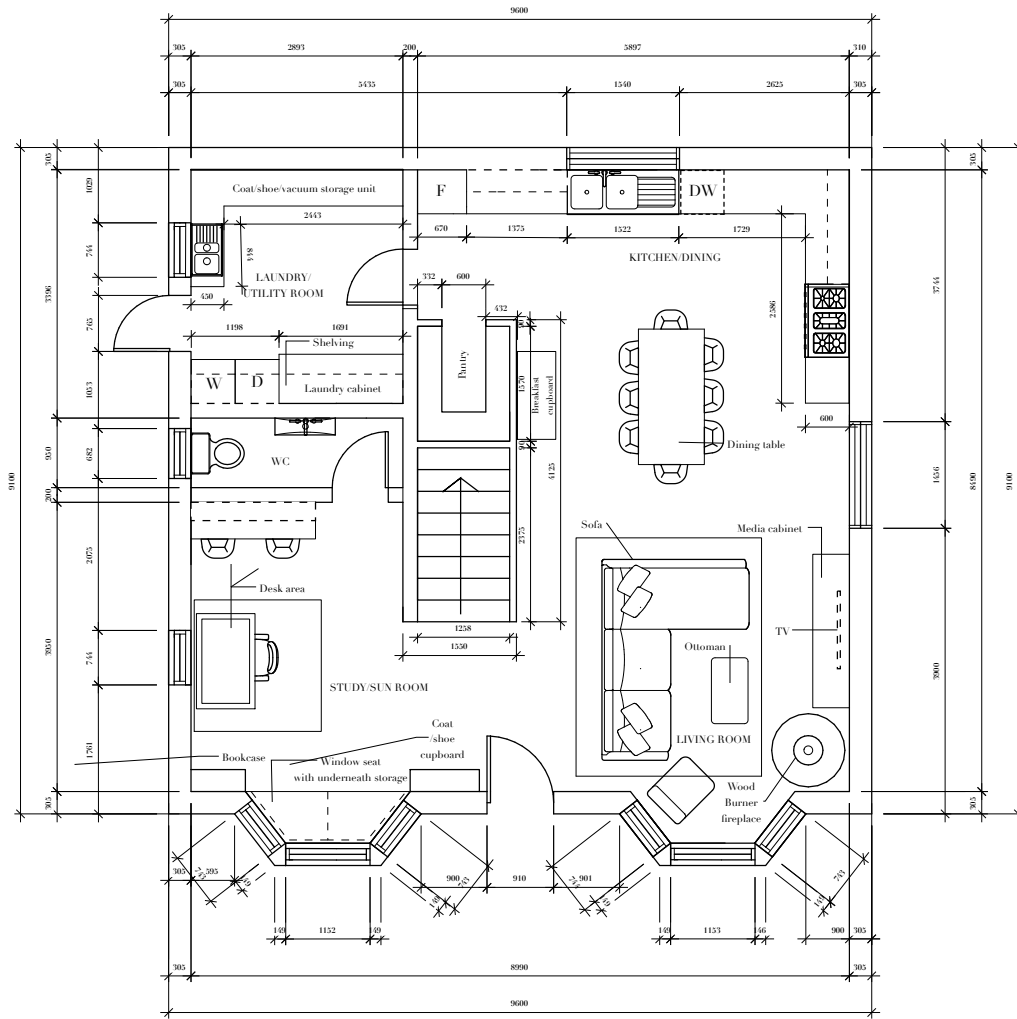
Digital renders of room designs, prior to work commencing


JOINERY 1
MEDIA WALL



Example
JOINERY DESIGNS

Digital renders of joinery designs, prior to work commencing





KEY

Window

Single Door

NOTES Consultation with a Structural Engineer will need to be undertaken prior to commencement of any work

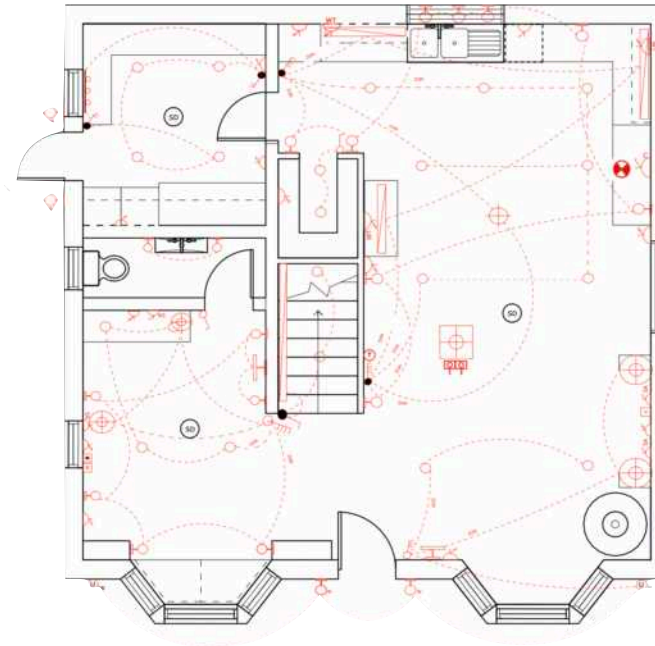
PROJECT NAME
IDI Module 4 Floorplan

DRAWING
Ground floor

Katie Cardew
01.02.2023

SCALE: 1/50

DRAWING NO. 1/1





NOTES

ALL WORK MUST BE DONE BY A REGISTERED ELECTRICIAN

Study/sun room: Quadruple switch panel. General lighting is supplied by dimmable recessed down lighters, dimmable wall mounted lights and the 2x table lamps on the desks, wired with 5A plug points for easy turning on/off from the wall. The picture light provides an accent light. Wall mounted lights wired into the joinery framing the bay window to provide task lighting for reading.

Stairs: 2 way single switch, recessed down-lighters and LED strip beneath bannister. Telephone/data entry points, 5A single points x 2 for lamps plus standard switched GPO's at points indicated on plan.

WC: Two wall mounted lights framing a mirror.

Utility room: General lighting supplied by recessed down lighters with a task bar spot light above the sink. Two way switch at both doors. Double GPO behind W/D and two addition double switched GPO's.

Kitchen Dining: Recessed down lighters, wall mounted lights to frame the room for softer general lighting, 3 wall mounted lights above sink for task lighting, above the cabinet LED strips for accent lighting with a feature pendant above the table. All dimmable. Two way quadruple switch. Switched GPO's at standard height in positions indicated on plan plus 3 triple GPO's at worktop height for appliances, inc. one inside breakfast cabinet. Extractor fan above range cooker.

Living room: two dimmable recessed down-lighters, table lamps to sit in the media cabinet wired in with 5A plug points x2, 1x floor lamp plugged in via a standard double floor socket and 1x accent picture light. Switched GPO's at positions indicated.

Pantry: two recessed down lighters, triple GPO.

Exterior: 2 x wall mounted fixture, weather proof, either side of front door. 2 x recessed ground light, weather proof. Wired to switch inside front door. 2 x sensor activated weather proof wall mounted lights at back door.

KEY

LIGHTING SYMBOLS

- Weather proof wall mounted fixture with sensor
- Fluorescent lamp
- Bar spot light
- Recessed downlight
- Wall mounted fixture
- Weather proof wall mounted fixture
- Picture lamp
- Suspended pendant
- Table lamp
- LED light strip
- Recessed ground light weather proof

ELECTRICAL SYMBOLS

- Double two way switch
- Quad two way switch
- Single switch
- Double switch
- Triple switch
- Quadruple switch
- Triple GPO with sensor
- Double GPO with switch
- Triple GPO with switch
- Quad GPO with switch
- 12L socket socket
- 1A single socket
- Triple GPO with switch, working height
- Double switched floor socket
- TV point telephone line Data with
- Extractor fan
- Fender detector
- Thermostat
- Wiring
- Dimming

PROJECT NAME
IDI Module 5 Lighting Plan

DRAWING
Ground floor RCP

Example
FLOORPLAN
 &
ELECTRICAL DESIGNS

Client
TESTIMONIALS

“Katie came and made sense of the numerous options available to us, distilling everything down to two schemes. She covered everything from paint colours, upholstery material, light fittings and ironmongery and left us feeling confident in our final choice. She isn’t afraid of bold designs and really helped get us out of our safe rut”

ANNA
NORTHAMPTONSHIRE

“After having real troubles deciding colours for our bathroom (6 months of looking at the sanded wood work, colour tester pots everywhere and living with an unloved bathroom!) I decided to get in touch with Katie and I am so glad I did, I feel inspired, have a goal to reach and now know and I am going to have the most gorgeous space which flows within my home.”

ISOBEL COLE
LEICESTERSHIRE

“We were a bit stuck with what direction to take with decorating after moving into a new house and Katie came up with such wonderful curated designs for our living room and bedroom.

It makes such a difference to have a plan we love and feel confident about.

Katie is a pleasure to deal with and can’t wait to do up our kitchen and bathroom with her!”

GIULIA
GLASGOW



GET IN TOUCH FOR A FREE QUOTE



E: homes@katiecardew.com

W: www.homesbykatiecardew.com

01572897567 897567

See more work on instagram:

[@homes_by_katiecardew](https://www.instagram.com/homes_by_katiecardew)

*British Institute of Interior Design
Provisional Associate member*

WE'RE ON

The List

HOUSE
& GARDEN